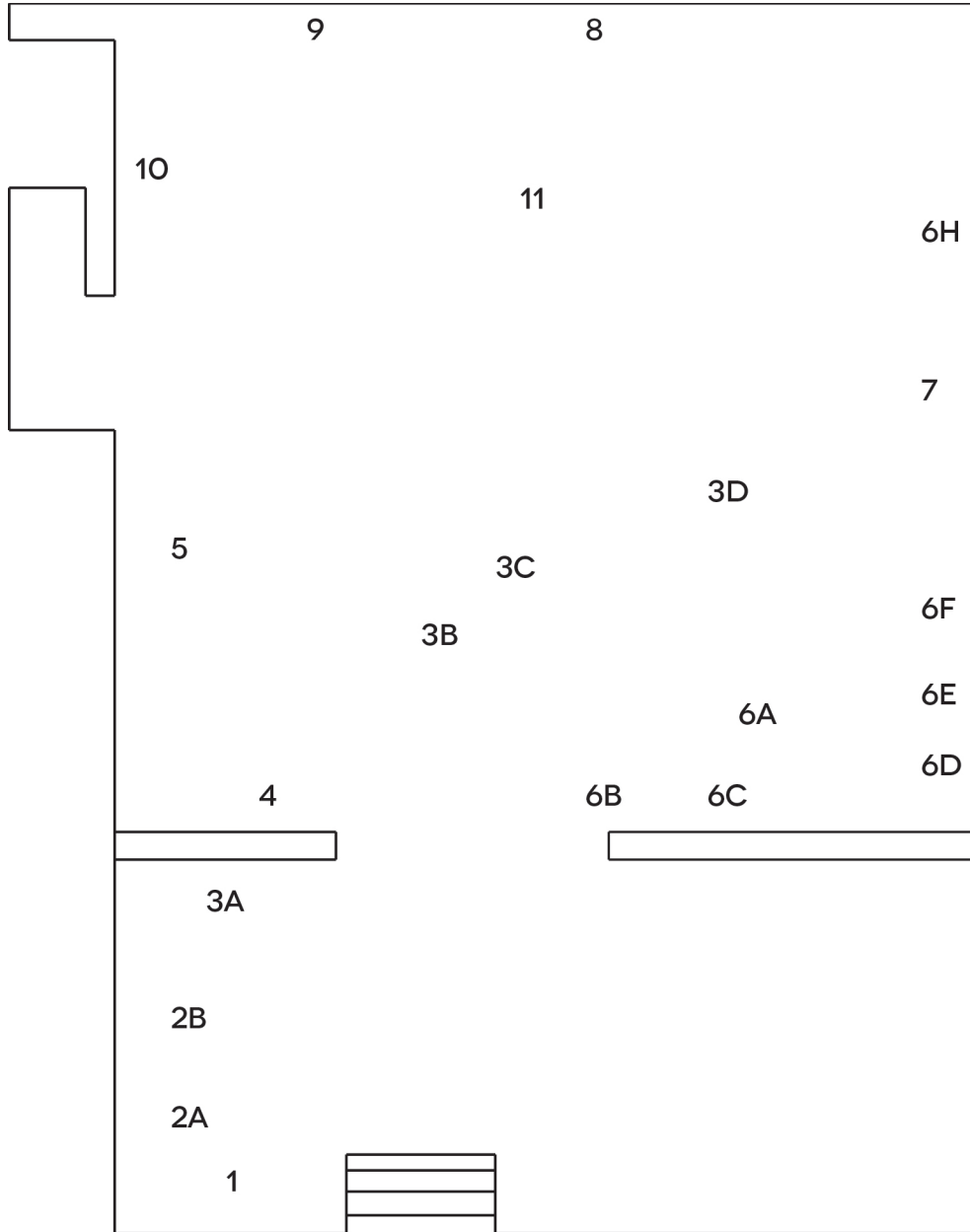




RETURNS

THURSDAY 12 FEBRUARY – WEDNESDAY 4 MARCH 2015



RETURNS

BONINGTON GALLERY
 Dryden Street
 Nottingham
 NG1 4GG
 +44 (0) 115 848 8268
www.boningtongallery.co.uk
boningtongallery@ntu.ac.uk

 [boningtongallery](https://www.facebook.com/boningtongallery)
 [@NTUBonGallery](https://twitter.com/NTUBonGallery)

Join the mailing list: www.boningtongallery.co.uk/events-mailing-list

1. **Andrew Brown** *Returns: sound walk*, 2015
- 2a-b. **Joanne Lee** *Vague Terrain, Pam Flett Press #4*, publication, 2015
- 3a. **Danica Maier** *Cabinet Collection: Caffe Pot*, Spode transfers, terrine lid, 2013/15
Cabinet Collection: Oatmeal Canape, Spode transfers, terrine lid, 2013/15
Cabinet Collection: Dog & Pheasant Bread Bin, Spode transfers, terrine lid, 2015
- 3b. **Danica Maier** *Cabinet Collection: Empty T Saucer*, Spode transfers, terrine lid, 2015
Plinths & Frames: Double Sugar Knobs, Spode transfers, 2015
- 3c. **Danica Maier** *Cabinet Collection: Mallard Service Plate*, Spode transfers, terrine lid, 2013/15
Cabinet Collection: Nose Tipped Boat Stand, Spode transfers, terrine lid, 2015
Plinths & Frames: Spodelagmite, Spode transfers, 2015
- 3d. **Danica Maier** *Cabinet Collection: Sheffield Service Snowshoe*, Spode transfers, blank terrine lid, 2013/15
4. **Danica Maier** *Pink Acorn*, teapot lids and pencil, 2015
5. **Andrew Brown** *5/11/2008: renovated christmas decorations from Spode factory*, 2015
- 6a-h. **Debra Swann** *Residue*, installation of objects, photographs and video, 2015
7. **Danica Maier** *Lasagne Shotgun*, Spode Transfers, vintage French deer hoof gun rack, 2015
8. **Joanne Lee** *Spode sequence*, photographic projection, 2015
9. **Chloë Brown** *Temple Dance*, film, duration 4:10 mins, 2015
Two Northern Soul dancers in the boardroom at the disused Spode Factory in Stoke-on-Trent
10. **Chloë Brown** *The Masonic Temple, Detroit*, ink drawing (drawn via Google Maps Street View), 2015
11. **Chloë Brown** *From Alfred Street to Temple Street, Detroit*, ink drawing, (ongoing - drawn via Google Maps Street View), 2015