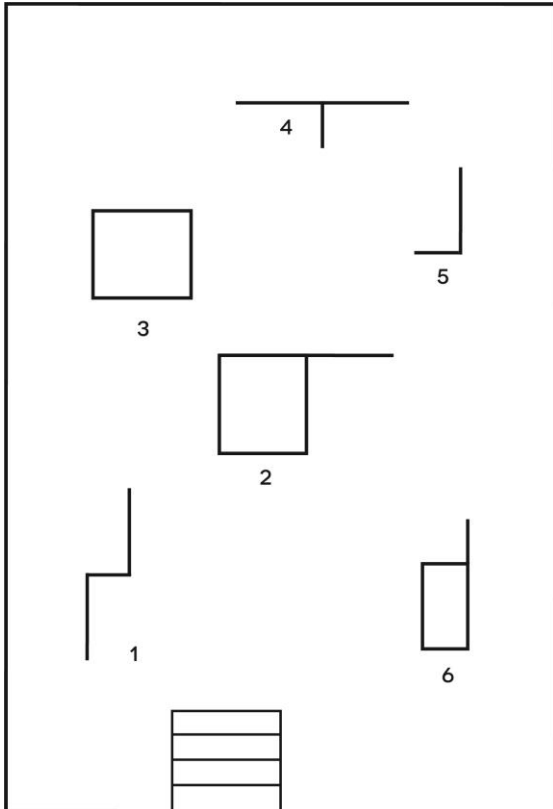




IT'S OUR PLAYGROUND

ARTIFICIAL SENSIBILITY

FRIDAY 22 SEPTEMBER – FRIDAY 27 OCTOBER 2017



1. *CHERRY_cherry_PEACH_peach*, 2017

UV print on dibond, aluminium casts, glass paint, aluminium box section, polyester

2. *VIOLET_violet_CORAL_coral*, 2017

UV print on dibond, aluminium casts, glass paint, aluminium box section, polyester

3. *ORANGE_orange*, 2017

UV print on dibond, aluminium casts, glass paint, aluminium box section, polyester

4. *OLIVE_olive_LAVENDER_lavender*, 2017

UV print on dibond, aluminium casts, glass paint, aluminium box section, polyester

5. *ROSE_rose*, 2017

UV print on dibond, aluminium casts, glass paint, aluminium box section, polyester

6. *SALMON_salmon_EGGHELL_eggshell*, 2017

UV print on dibond, aluminium casts, glass paint, aluminium box section, polyester

COLLABORATORS

Casting and foundry: Benoît Villemont

Graphic design (typography): Camille Garnier and Alex Paraboschi

Sound piece: Thibaut Villemont

A solo exhibition of new work by Paris-based artist duo It's Our Playground (IOP), comprised of Camille Le Houezec and Jocelyn Villemont. Artificial Sensibility continues the duo's ongoing reflection on artificial intelligence – when technology mimics human cognitive behaviour – revealing a hybrid learning process of automated principles of recognition and basic human methods of education.

Artificial Sensibility presents a series of intuitively formed constructs of blended colours, warped shapes and images of natural elements – giving rise to free-form poetic response.

We caught up with IOP to find out more about the process; here's a snapshot of what they had to say...

“ The starting point of this exhibition is ‘image recognition’, a process used to identify an object or a feature in a digital image. A toddler will only need to see the image of an apple a few times before naming it, whereas a machine will have to inspect hundreds of apples in order to identify it. Both the human brain and the computer rely on the shape, the colour, the pattern of a thing to recognise it.

We find it interesting that humans create machine learning processes based on brain function. The show focuses on how the flaws of these automated techniques can lead to misunderstanding, create confusion or even poetry.”

Visit www.boningtongallery.co.uk/blog to read the full in-conversation piece. Reference copies are available from our gallery invigilator.

WHAT'S ON

BONINGTON FOYER

BONINGTON VITRINES #3

LONDON'S CALLING

FRIDAY 22 SEPTEMBER – FRIDAY 27 OCTOBER 2017

A collection of design memorabilia and reflections, from the 1980s archive of Juliana Sissons.

In 1979 Juliana Sissons arrived in London, having completed a course in fashion design at Loughborough College. Influenced by the vibrant, rapidly evolving backdrop of a clubbing and fashion scene that embraced creative self-expression and challenged every rule book in existence, she was soon designing her own label 'Call Me Madam'. Her opulent designs were inspired by old-fashioned glamour, reinterpreted in bold, hedonistic directions that pushed the boundaries of male and female identity and deliberately defied sexual convention.

Juliana's debut catwalk show was held in 1980 at Heaven nightclub, the first iconic superclub to establish itself as the centre of gay London nightlife. She went on to take the shows to the USA and Europe, and even presented a full catwalk, in collaboration with Heaven, on board a Virgin Atlantic flight.

Her unique list of clients spanned performance artists, costumiers, drag queens, dancers and musicians, clubbers, models, designers and style icons, amongst them; Lee Alexander McQueen, Frankie Goes to Hollywood, Top of the Pops, Divine, Scarlett Cannon, Leigh Bowery, Isabella Blow and Judy Blame.

London's Calling offers a unique and fascinating insight into an era of rapid change and defiant creativity in the capital, presenting an eclectic collection of Juliana's personal memorabilia and influences, iconic magazine features, design objects, video footage and snapshots of her life as a designer in London through the 1980s.

ASSOCIATED EVENT

In conversation with Scarlett Cannon and Juliana Sissons
Wednesday 25 October (times and booking available soon).

SIMON CALLERY

WILTSHIRE MODULOR (SMALL, 2010–2013)

PERMANENT DISPLAY

We are delighted to unveil the latest addition to the Nottingham Trent University art collection from artist Simon Callery. Simon joined us in 2015 for his solo exhibition *Soft Painting*. *Wiltshire Modolor* (small, 2010-2013) will be on permanent display in Bonington Gallery's foyer space and joins a number of artworks and artefacts that relate to recent exhibitions at Bonington Gallery. These works are distributed about our foyer area and information about all the works and their origin exhibitions are presented on plaques alongside each work.