

C/J

CHLOÉ MARATTA & JOANNE ROBERTSON

FRIDAY 5 APRIL – SATURDAY 18 MAY 2019

Bonington Gallery is delighted to present C/J, an exhibition of newly commissioned works by Los Angeles-based artist, musician and jewellery designer Chloé Maratta and Glasgow-based artist and musician Joanne Robertson.

Reflecting their shared interests in clothing, both artists have been invited to work with and respond to artefacts from Nottingham Trent University's (NTU) FashionMap Archive, a unique collection of garments and accessories purchased from high street retailers since 2000.

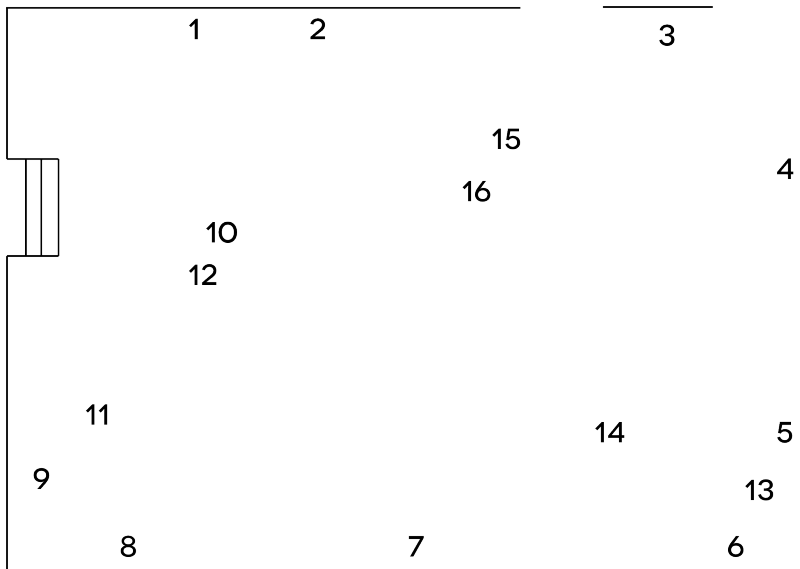
Maratta embeds her practice into her life via a process of gathering clothing and ephemera that she encounters and experiences on a daily basis. Materials are collaged into jewellery and styled outfits, frequently extending into photography, photo-collage and sculpture.

Robertson works predominantly with painting that occasionally extends beyond the canvas to found objects. Having worked previously with clothing, Robertson's new paintings appear to reference garments through the language of abstract painting.

Through art production, music and fashion, both artists convey an immediacy and irreverence towards various forms of cultural and social hierarchy, making the involvement of NTU's high-street fashion archive all the more poignant.

The exhibition is accompanied by a commissioned text by New York based writer Esra Padgett, available separately.

Titles overleaf.



1. Joanne Robertson, *Phone Numbers 7*, oil on canvas, 120 x 90 cm.

2. Joanne Robertson, *Phone Numbers 8*, oil on canvas, 120 x 90 cm.

3. Joanne Robertson, *Program*, oil on canvas, 160 x 130 cm.

4. Joanne Robertson, *Petrol*, oil on canvas, 180 x 150 cm.

5. Joanne Robertson, *Phone Numbers 9*, oil on canvas, 50 x 40 cm.

6. Joanne Robertson, *Players*, oil on canvas, 200 x 180 cm.

7. Joanne Robertson, *High*, oil on canvas, 180 x 150 cm.

8. Joanne Robertson, *Phone Numbers 10*, oil on canvas, 50 x 40 cm.

9. Joanne Robertson, *Phone Numbers 11*, oil on canvas, 180 x 150 cm.

10. Chloé Maratta, *Look 1*.

CEM trashy bangle, CEM laurie therapy cuff, CEM Rock&Rose ring. Suit, purse, joggers, and digital timer sweatband from NTU FashionMap Archive. .

11. Chloé Maratta, *Look 2*.

CEM pen rosary. White socks, velvet shorts, sequined net scarf, Sex Pistols shirt, Gold handbag from NTU FashionMap Archive.

12. Chloé Maratta, *Look 3*.

CEM stud corsage, CEM GOD earring. Grey cable knit leggings, Cream thong, Belly chain, Grey fingerless gloves, Leopard Scarf, from NTU FashionMap Archive.

13. Chloé Maratta, *Look 4*.

CEM heart rock cuff, CEM ID bangle, CEM rock neck cuff. Marled socks, Chain Maille halter, Grey scarf, Pearls, Flag handbag from NTU FashionMap Archive.

14. Chloé Maratta, *Look 5*.

CEM LBC cuff, CEM Shell choker, CEM bella2 earring. Ballet flats, jeans, clutch, bag charm, and pantyhose from NTU FashionMap Archive.

15. Chloé Maratta, *Vignette 1*.

CEM gwen rock bangle, CEM HK rock bangle, CEM flower cuff. Gold bangles and frayed tweed blazer from NTU FashionMap Archive.

16. Chloé Maratta, *Vignette 2*.

CEM Virgin choker, CEM pick ring, CEM rock ring. Handbag and gloves from NTU FashionMap Archive.